

# COST-EFFECTIVE AUTOMATION

COMPACT UNITS FOR:

- DRILLING
- TAPPING
- MILLING

[www.e2systems.com](http://www.e2systems.com)

**PNEUMATIC  
DRILLING UNIT  
BE 33 SK**



# PNEUMATIC DRILLING UNIT BE 33 SK

The BE 33 SK consists of an air motor, a gear box and a body. The design is compact as well as robust. BE 33 SK comes in a wide range of speeds, and is available for lubrication-free operation.

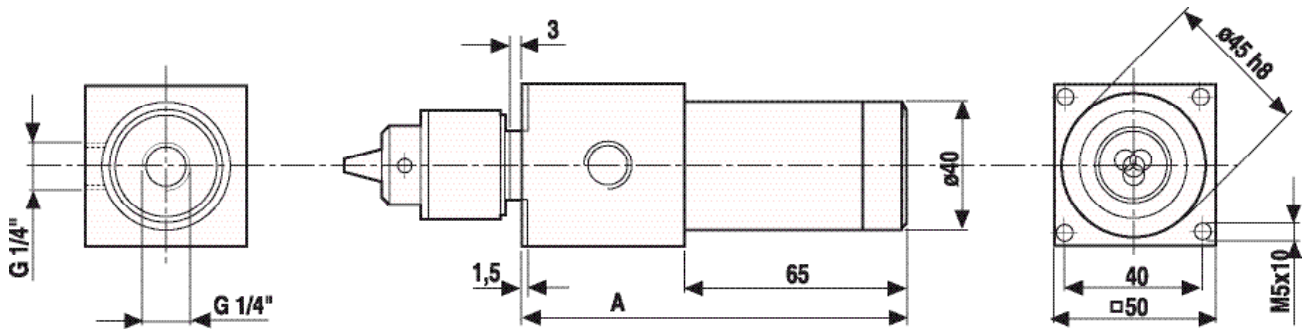
- STURDY AND COMPACT DESIGN
- WIDE RANGE OF RPMs
- DIRECTED EXHAUST
- CHUCK ALTERNATIVES UP TO Ø20 MM
- IS AVAILABLE IN COUNTER CLOCKWISE ROTATION



Guidelines for choice of unit													[Ø, mm]
DRILLING UNIT		CAPACITY IN STEEL				CAPACITY IN ALUMINIUM/BRASS				CAPACITY IN WOOD/PLASTICS			
No of Spindles		1	2	3	4	1	2	3	4	1	2	3	4
LOW SPEED	BE 335 SK	13	7	6	6	16	10	10	9	26	12	10	10
	BE 337 SK	13	7	6	6	16	10	10	8	22	12	10	10
	BE 3313 SK	10	7	6	5	14	10	8	8	20	12	10	10
HIGH SPEED	BE 3326 SK	9	6	5	4	12	9	8	6	16	10	10	9
	BE 3333 SK	6	5	4	3	9	7	6	6	13	10	8	8
	BE 3360 SK	4	4	3	3	7	5	5	5	10	8	6	5
	BE 33210 SK	2.5				4				5			

Performance specifications at 6.3 Bar			
Power	0.36 kW	Run-out at spindle nose (max.)	0.05 mm
Min. Center to Center Spacing		Working pressure range	6–7 Bar
Single Spindle	50 mm		
Double-Spindle Head	11 mm		
Air consumption	<0.5 Nm <sup>3</sup> /min	Sound level	70 dB(A)

DRILLING UNIT	SPEED (IDLE) [RPM]	SPEED (AT MAX OUTPUT) [RPM]	TORQUE (AT MAX OUTPUT) [NM]
LOW SPEED	BE 335 SK	500	250
	BE 337 SK	700	350
	BE 3313 SK	1 300	650
HIGH SPEED	BE 3326 SK	2 600	1 300
	BE 3333 SK	3 300	1 650
	BE 3360 SK	6 000	3 000
	BE 33210 SK	21 000	10 500



You can download 2D CAD-drawings and 3D CAD-models on [www.e2systems.com](http://www.e2systems.com).

DRILLING UNIT	A	[MM]	WEIGHT	[KG]
LOW SPEED	BE 335 SK	149		2.0
	BE 337 SK			
	BE 3313 SK			
HIGH SPEED	BE 3326 SK	115		1.4
	BE 3333 SK			
	BE 3360 SK			
	BE 33210 SK			

Necessary components

CHUCKS	TYPE	PAGE
	Key chucks Ø 0.8–10.0 mm (Standard chuck)	50
	Collet Chucks Ø 1.0-8.0 mm Ø 1.0-15.0 mm Ø 2.0-20.0 mm	51
COLLETS	TYPE	PAGE
	ER11 Ø 1.0-8.0 mm ER20 Ø 1.0-15.0 mm ER32 Ø 2.0-20.0 mm	51

Accessories

MULTI-SPINDLE HEADS	TYPE	PAGE
	Adjustable heads VH04-, VH06-, VH08-, MBK 6V- and MBKV 60-series	42 46
CONTROLS	TYPE	PAGE
	Contrls for BE SK- units	54

On [www.e2system.com](http://www.e2system.com) you can find more information as well as the same information as above in imperial units.

When requesting a quote or ordering please state: **Model, Chuck (collet size) and if it is to be used in Lubrication-free operation and/or CCW-rotation.**

You will find units for Drilling, Tapping and Milling installed wherever increased rates of production are required. They are a cost-effective means of automating drilling, tapping and milling operations.

E2 products are known world wide for their quality, durability, precision and power. Each series of E2 units are the most compact in the market today.

E2 customers benefit from the high quality of the E2 product line with less down-time and reduced operating costs. The compact design of the E2 units together with a good availability of CAD-drawings/-models makes the design of a machine more straight forward.

E2's concern for the worker and his environment is evident in all E2 products. Low noise levels and non-lubrication features eliminating oil mist in the air is a common feature of the E2 product line.

E2 self-feeding units utilizes a built-in hydraulic feed control system. They combine precision with power enabling a high level of precision also in multi-spindle head applications. The extremely compact Air hydraulic drilling units and Lead screw tappers are ideal for drilling/tapping smaller holes. E2's electro-pneumatic and –hydraulic units can to be used when more power is required. You will still have the E2 durability and precision. The E2 product line also includes non-feed pneumatic units perfect for drilling as well as milling, slitting and grinding.

Complementing the line of units, E2 also offers a full line of accessories for machining applications.

E2 also have supplementary product lines of

- Rotary actuators
- Air thrusters
- Pneumatic/Hydraulic components and systems

E2 Systems AB, Strömslundsgatan 3, SE-507 62 Borås, Sweden

Tel: +46 33 20 88 40 , Fax: +46 33 20 88 49

[www.e2systems.com](http://www.e2systems.com)