

ELECTRO PNEUMATIC DRILLING UNIT BE 48

The BE 48-series is a flexible electro-pneumatic series of units in a modular design. The electric motor powers the spindle, while the feed is pneumatic. Hydraulic feed control makes it possible to include functions such as multi-wall drilling, rapid advance and automatic chip removal. The series is available with JT2 taper or integrated ER32 chuck as well as with multi-spindle heads.

- COMPACT YET FLEXIBLE DESIGN
- MODULAR HYDRAULIC FEED CONTROL FOR THE WHOLE STROKE
- SMART DEPTH CONTROL
- LINEAR TRANSDUCER FOR TOTAL CONTROL OF THE COMPLETE CYCLE (OPTIONAL)



Guidlines for choice of unit

[Ø, mm]

DRILLING UNIT	CAPACITY IN STEEL				CAPACITY IN ALUMINIUM/BRASS				CAPACITY IN WOOD/PLASTICS			
	No of Spindles	1	2	3	4	1	2	3	4	1	2	3
BE481	10	6	4	3	15	12	8	6	21	16	11	8
BE484	12	8	5	4	20	16	11	9	26	19	15	12
BE487	16	10	7	5	25	20	15	12	35	25	20	15

Performance specifications at 6.3 Bar

Thrust (max.)		Min. Center to Center Spacing		Rapid advance rate (max.)	10 m/min
BE481	1 650 N	Single Spindle	90 mm	Controlled feed rate	>0.04 m/min
BE484	2 000 N	Double-Spindle Head	12 mm	Air consumption	2.8 l/100mm
BE487	2 000 N	Run-out at spindle nose (max.)	0.02 mm	Sound level	<85 dB(A)
Stroke (max. 100% controlled)	100 mm	Depth accuracy +/-	0.01 mm		

Motor and Transmission specifications

No of Poles	DRILLING UNIT/MOTOR AT V380-420(Y)/220-240(Δ)50HZ [kW]		
	BE481	BE484	BE487
2	0.55	1.1	2.2
4	0.37	0.75	1.5
6	0.25	0.55	1.1
8			0.55

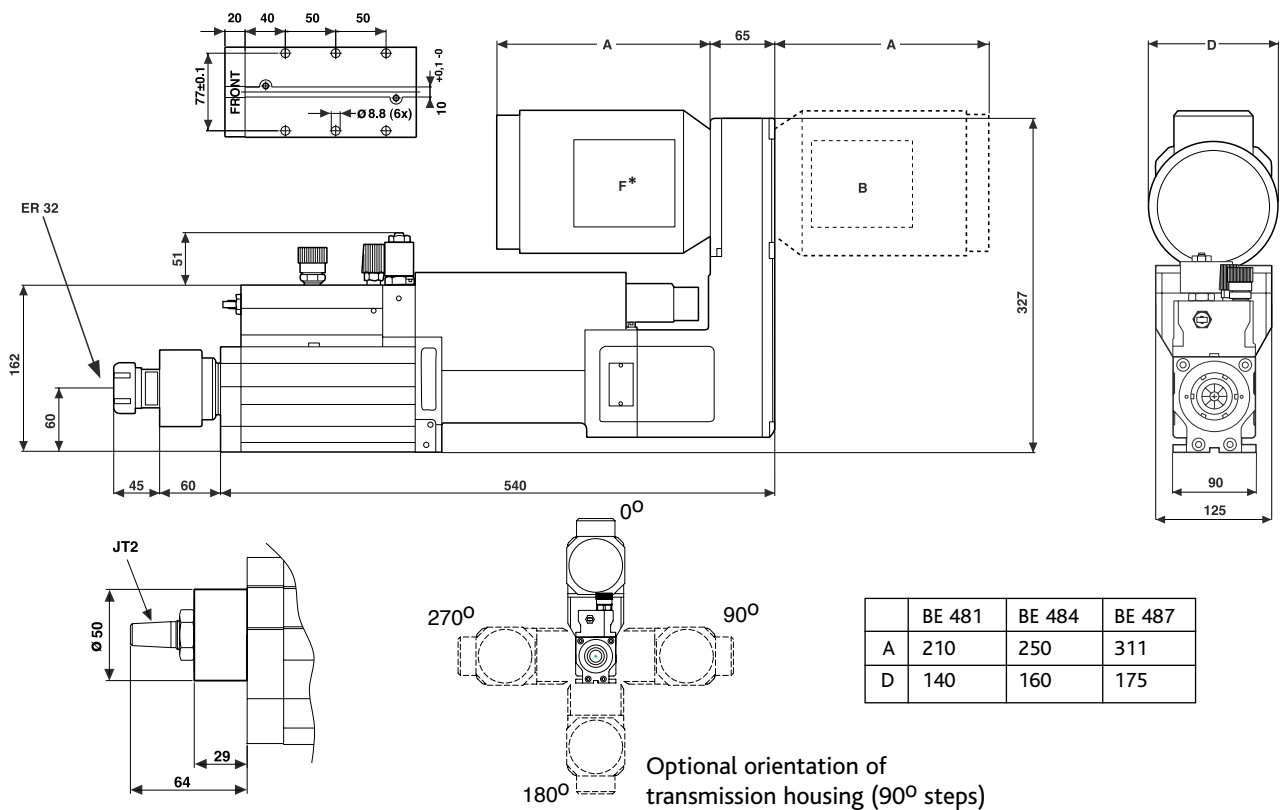
• Motor specifications shown in the tables are valid for 380–420V(Y) /220–240V(Δ) (±5%), 50 Hz. These motors can also be used at 440–480V(Y) (±5%), 60 Hz. If so the rpm will increase by ~20% and the power by ~15% relative to the data for 50Hz. E2 also offers motors for other voltages and frequencies. Please state voltage and frequency when requesting a quote or ordering.

• The torque at the spindle for a specific rpm is calculated as:

$$M = (P_{[kW]} \times 9500) / \text{rpm}$$

No of Poles	SPINDEL RPM AT GEAR RATIO AND 50HZ													
	2.5:1	2.1:1	1.8:1	1.6:1	1.4:1	1.2:1	1:1	1:1.2	1:1.4	1:1.6	1:1.8	1:2.1	1:2.5	1:3.1
2	1130*	1350	1580	1750	2090	2420	2820	3290	3810	4550	5040	5880	7170*	8600*
4	560*	670	780	860	1030	1190	1390	1620	1880	2240	2480	2900	3530*	4240*
6	360*	440	510	560	670	780	910	1060	1230	1470	1630	1900	2310*	2780*
8	270*	330	380	420	500	580	680	790	920	1100	1210	1420	1730*	2070*

*Not available for BE487


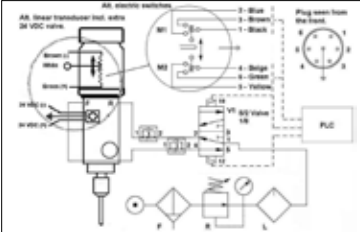


*Front mount is not possible at BE487 with linear transducer

You can download 2D CAD-drawings and 3D CAD-models on www.e2systems.com.

WEIGHT 29-40 KG

Necessary components		
CHUCKS	TYPE	PAGE
	Drill Chucks for JT2 Ø 1.0–10.0 mm Ø 3.0–16.0 mm	47
	Integrated ER32 Collet Chuck Ø 2.0–20.0 mm	47
COLLETS	TYPE	PAGE
	ER32, Ø 2.0–20.0 mm	47
LIMIT SWITCHES	TYPE	PAGE
	Electric switches Pneumatic switches Inductive switches or Linear Transducer	51

Accessories		
MULTI-SPINDLE HEADS	TYPE	PAGE
	Adjustable heads VH04- VH06, VH08, VH10-	38
CONTROLS	TYPE	PAGE
	Controls for BE 48-units with Electric switches Pneumatic switches Inductive switches or Linear Transducer	51

On www.e2systems.com you can find more information as well as the same information as above in imperial units.

When requesting a quote or ordering, please state: **Model, Chuck (collet size), Limit Switches, Spindle rpm, Motor Power and Front or Backward Motor orientation.**